

CREATE NEW
EXTRAORDINARY
MOMENTS

NEW KOLLEKTION OUT NOW



BoConcept[®]

LIVE EKSTRAORDINÆR



INSPIRED BY MOVEMENT

DESIGN YOU CAN FEEL

Discover our New Kollektion, with modern new furniture designs, updated configurations and eye-catching colours and materials. These dynamic pieces are fully customisable to fit your lifestyle, creating design you can feel. Explore the breadth of this incredible collection by delving into this inspirational lookbook from our New Kollektion.

THE
SALAMANCA
SOFA



*“It’s designed not to live with
but to live in. There is no strict
system to this bohemian style - play
around with the cushions, find
your favourite position and chill.”*

HENRIK PEDERSEN, DESIGNER

Comforting curves meet a square shape to create the Salamanca sofa. Designed by famed furniture designer Henrik Pedersen, this low and 'floating' lounge sofa with oversized proportions has been created to really kick back.



With free standing or modular versions available, the design also allows for customisation and flexibility with the moveable cushions. The super soft crafted seats take comfort to the next level.

SPEND THE MORNING RELAXING
ON THE STYLISH SALAMANCA SOFA



NEW NAPOLI FABRIC IN DUSTY GREEN



“The panels are curved and the vast ceramic top is transmitting an organic feel.”

DESIGNED BY MORTEN GEORGSSEN

ENJOY BRUNCH WITH
THE CONTEMPORARY FEEL OF THE
SANTIAGO

Where beauty and functionality meet, the new Santiago dining table makes an elegant statement piece for people who love to entertain. Designed by Morten Georgsen, this simple yet striking design will appeal to those who love clean lines and timeless finishes.

The Santiago is available in two different sizes - 230cm and 180cm. This roomy size means you can have six or eight chairs for everyday use plus extra space for social occasions. This particular style is also available as a coffee table.





“Living and dining rooms are now just one space in a lot of houses”. Georgsen discusses “We have torn down the walls and what does that mean? It means we have room for a bigger dining table because that is where we are with our friends and family.”

The oval-shaped top comes in a durable and hard wearing ceramic, available in white, brown and Ash Grey. “The natural expression of the ceramic really comes into its own on a large surface like this”, says Ditlev Jensen. The glossy top is combined with bevelled pillar-style legs, which are available in Dark Oak and Ash Grey.



NEW HAMILTON CHAIRS AND DARK OAK PILLAR-STYLE LEGS

TURN THE
CALGARY

FROM DAY TO NIGHT

Discreet desk, mini bar, stylish storage - discover the art of display with the Calgary. The Calgary system is customisable without being overwhelming - it comes in seven fixed models (with high and low, and wide or narrow versions) that can be used in all areas of the home. There are options for drop-down covered storage, shelves at customisable depths, and drawers. Or you can select a multifunctional set-up with integrated home office or bar, depending on your priorities! The metal rails come in Ash Grey and Matt Black, the inserts in Ash Grey, Natural Oak and Dark Oak, allowing for a variety of finishes.



“The Calgary system is a contemporary storage and display system for how we live now. It brings together versatile functionality with a lightness of expression and beautiful proportions.”

MORTEN GEORGSSEN, DESIGNER



NEW ASH GREY METAL RAILS AND INSERTS



FEEL THE NEW FINISH OF THE
OSAKA SOFA

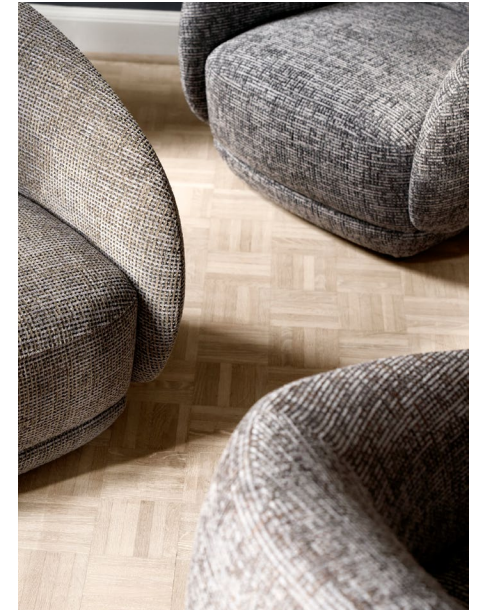
3 SEATER FROM ONLY
£1,719*



NEW TUSCANY FABRIC
*Osaka sofa as shown £2,641

EXPERIENCE THE NEW
TUSCANY FABRIC

A beautiful addition to the upholstery at BoConcept includes the new Tuscany fabric – a woven jacquard chenille fabric that has a cosy tactile finish. It comes in seven shades and its rich, layered texture gives each piece a unique colour mix.



This perfectly layered fabric can be seen in blue on the Osaka sofa to the left, in addition to a few other colours on the armchairs above.



STARTING FROM
£1,149*

NEW LAZIO COLOUR

*Price in new Tuscany £1,509
*Price as shown in new Lazio £2,149

ENCOUNTER THE NEW FABRIC OF THE
MODENA SOFA

Organic shapes and minimal lines come together in the Modena sofa. Designed with superior seating comfort, soft armrests and a low back, this minimalist design invites all-day relaxation. Now available in a brand new colour shown above, adding a cool Grey tone to its repertoire. Finished with refined stitching and an elegant pull-in on both the cushion seat and back.

ADMIRE THE NEW COLOUR OF THE
COMO STORAGE

Showcase your most prized possessions with the Como storage collection. This smart storage system is completely customisable, allowing for a true personal expression in your home. It is designed to be combined and arranged, as well as mixed and matched, to create the perfect storage solution for your storage needs. Select pieces are now available in Dusty Green, Dark Oak and Ash Grey.

NEW DUSTY GREEN LAMINATE FINISH



NEW ASH GREY LAMINATE FINISH



NEW FOUR SEATER CONFIGURATION



PRINCETON CHAIR IN NEW
KNITTED BRESSO FABRIC

SETTLE IN THE NEW SIZE OF THE
KINGSTON TABLE

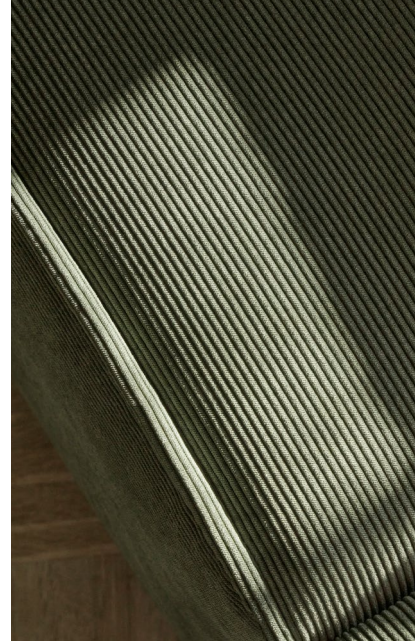
Beauty and functionality come together in the Kingston table. With an organic tabletop that radiates softness, it is finished with slightly tapered and inclined legs to ensure a light, Nordic look. The best-selling Kingston dining table has been updated in a smaller version with a fixed tabletop. So, you can add more stylish furniture that works for smaller living spaces.

RELAX IN THE NEW FINISH OF THE
CARMO SOFA

The Carmo sofa is a cubic sofa design that adds a contemporary touch to any space. Designed with statement-making square shapes and crafted with soft foam on the backrests and armrests, this modular sofa also offers superior seating comfort. Now available in a new Napoli velvet fabric, shown in the shade Dusty Green, in addition to another earthy shade named Sand.



NEW NAPOLI FABRIC IN SHADE DUSTY GREEN





NEW 1.5 SEATER

NESTLE INTO THE
BOLZANO
SWIVEL CHAIR

A timeless expression with a cocooning feel, the Bolzano swivel armchair combines soft organic shapes with clean minimalistic lines. Made with the perfect foam to frame ratio for superior seating comfort. Designed by Morten Georgsen, it's complete with a hidden swivel feature that allows 360-degree rotation. Available in the new upholstered fabrics, the Tuscany collection.

EXPLORE THE NEW CONFIGURATION OF THE
BERGAMO SOFA

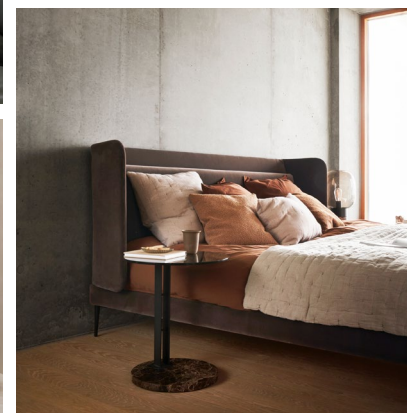
Classic yet contemporary with clean lines and organic curves, this timeless sofa is beautiful from every angle. Designed by Morten Georgsen, it boasts incredible depth for a welcoming look and free-standing cushions for flexible seating. Now introducing an additional 1.5 seater option to meet your needs for more compact combinations.



NEW TUSCANY FABRIC

COMPLEMENTING
ACCESSORIES

Sculptural simplicity. Natural materials such as travertine, marble, and sandstone are at the core of our new season accessories collection. Characterised by a “less is more” aesthetic, the range includes sculptural bowls, candle holders, vases, bookends and more.



FREE INTERIOR
DESIGN SERVICE

You can change the size, colours and materials of nearly every design at BoConcept. And our team of interior designers and design professionals are here to help you style your home, your way.

Book your **free interior design consultation today** and we'll meet in-store, virtually, or in your home to learn about your tastes, initial ideas and lifestyle.

We will collaborate to create your designs, often incorporating existing furniture. Finally, we will deliver your vision and produce inspirational **3D drawings** of our proposal, that matches your budget and lifestyle, while reflecting your unique personality.



BOCONCEPT.COM

BoConcept®

LIVE EKSTRAORDINÆR